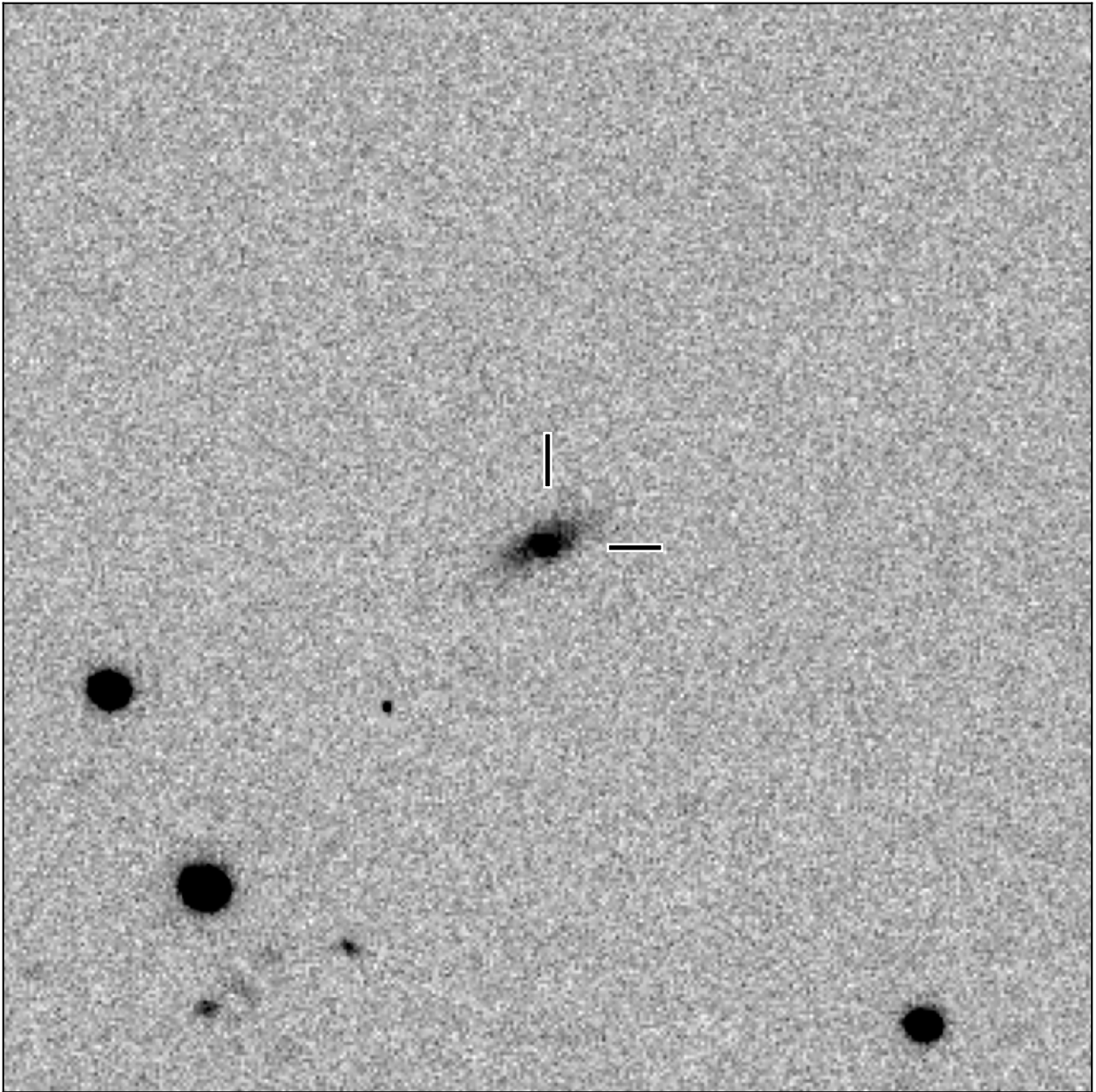


BlackGEM-2 finding chart for BGEM J121207.39+235728.8

North

East



1'

Target: BGEM J121207.39+235728.8
RA (ICRS): 12:12:07.40 (183.0308 deg)
DEC (ICRS): 23:57:28.82 (23.9580 deg)
Image: BG2_20250304_041756_red
Filter: q
Limiting magnitude: 20.68 (5σ)
Finding chart size: 3.0x3.0 arcmin