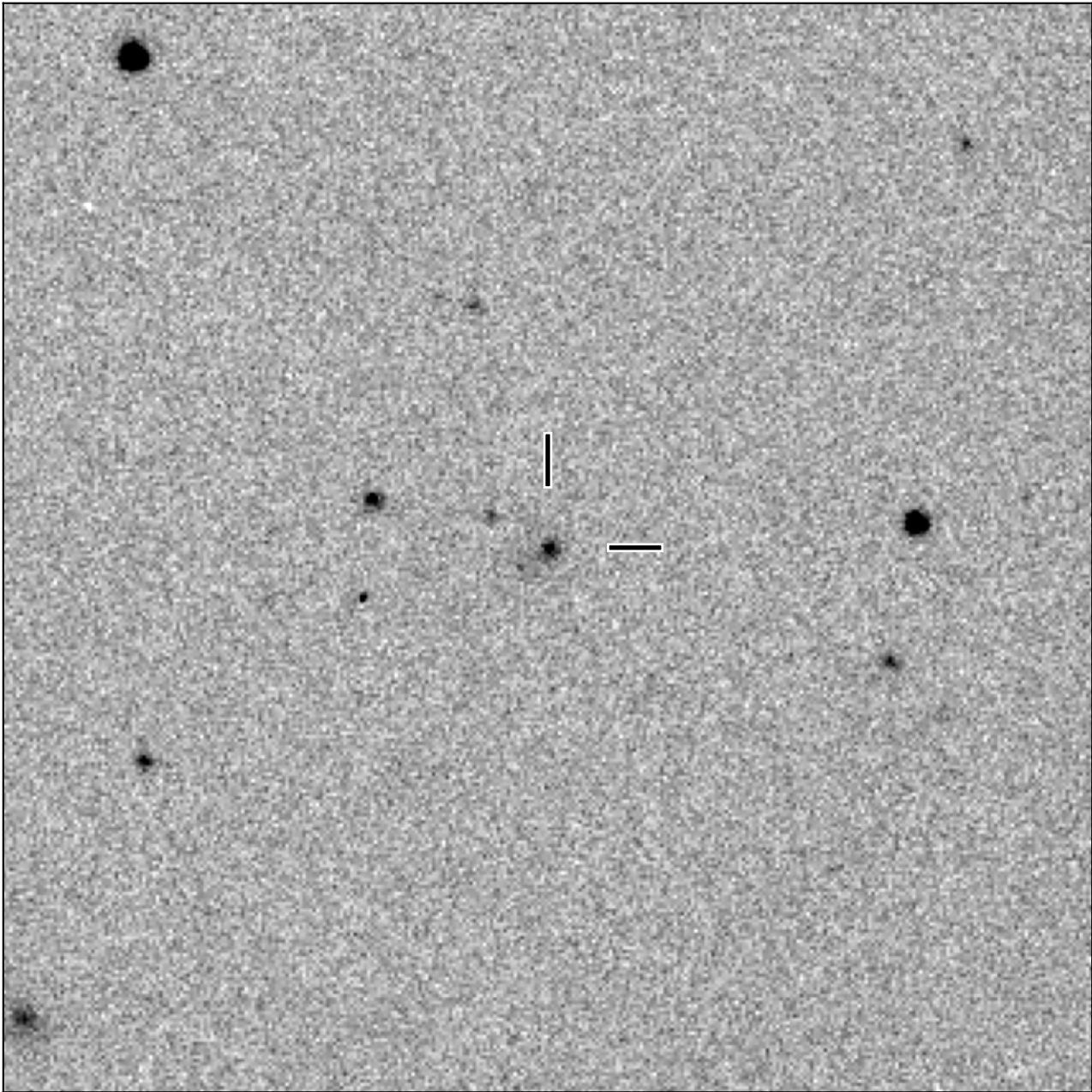


# BlackGEM-4 finding chart for BGEM J104928.18-171121.2

North

East



1'

Target: BGEM J104928.18-171121.2  
RA (ICRS): 10:49:28.18 (162.3674 deg)  
DEC (ICRS): -17:11:21.21 (-17.1892 deg)  
Image: BG3\_20250513\_000858\_red  
Filter: q  
Limiting magnitude: 19.91 ( $5\sigma$ )  
Finding chart size: 3.0x3.0 arcmin