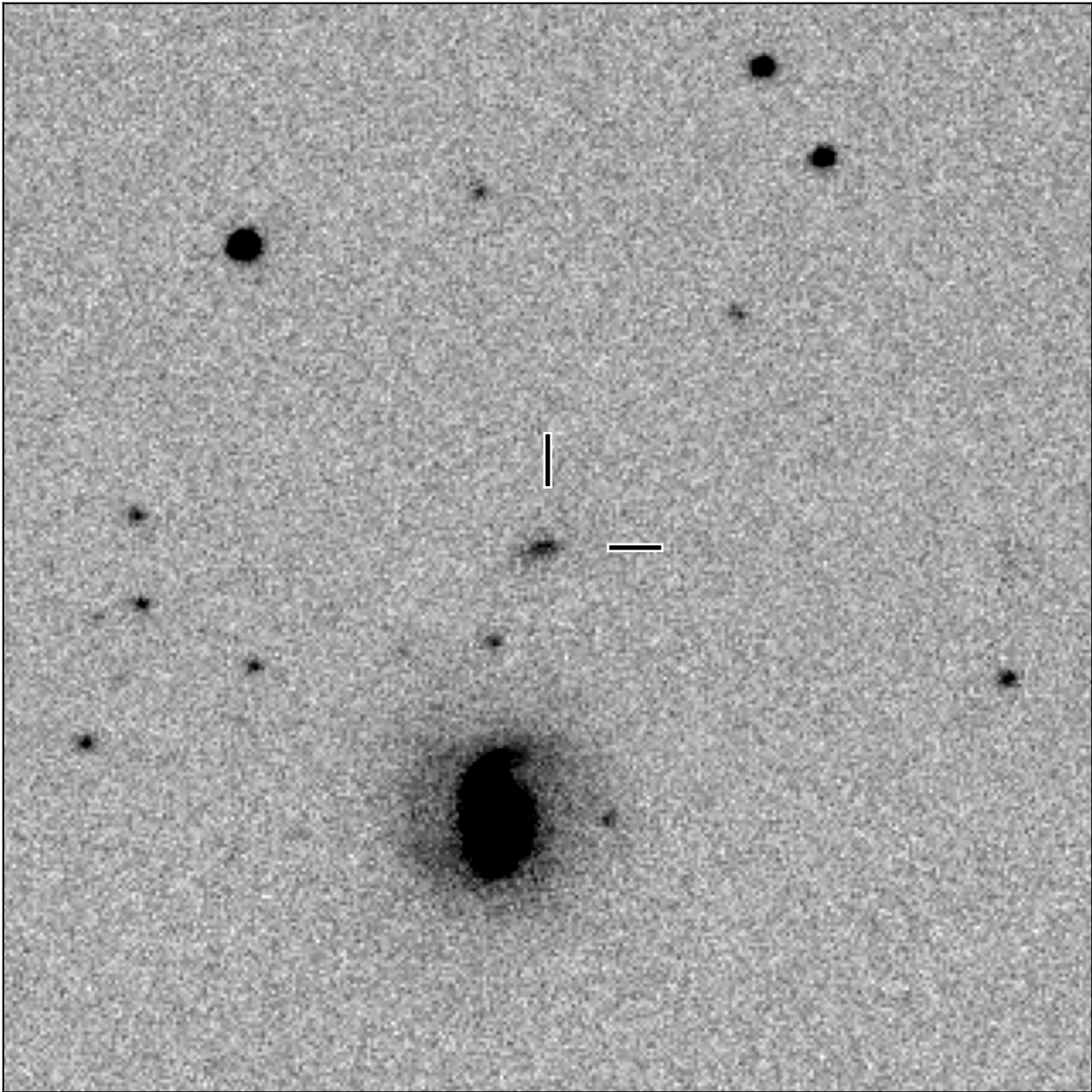


BlackGEM-2 finding chart for BGEM J101109.29-205129.5

North

East



1'

Target: BGEM J101109.29-205129.5
RA (ICRS): 10:11:09.29 (152.7887 deg)
DEC (ICRS): -20:51:29.58 (-20.8582 deg)
Image: BG2_20250512_233224_red
Filter: q
Limiting magnitude: 20.11 (5σ)
Finding chart size: 3.0x3.0 arcmin