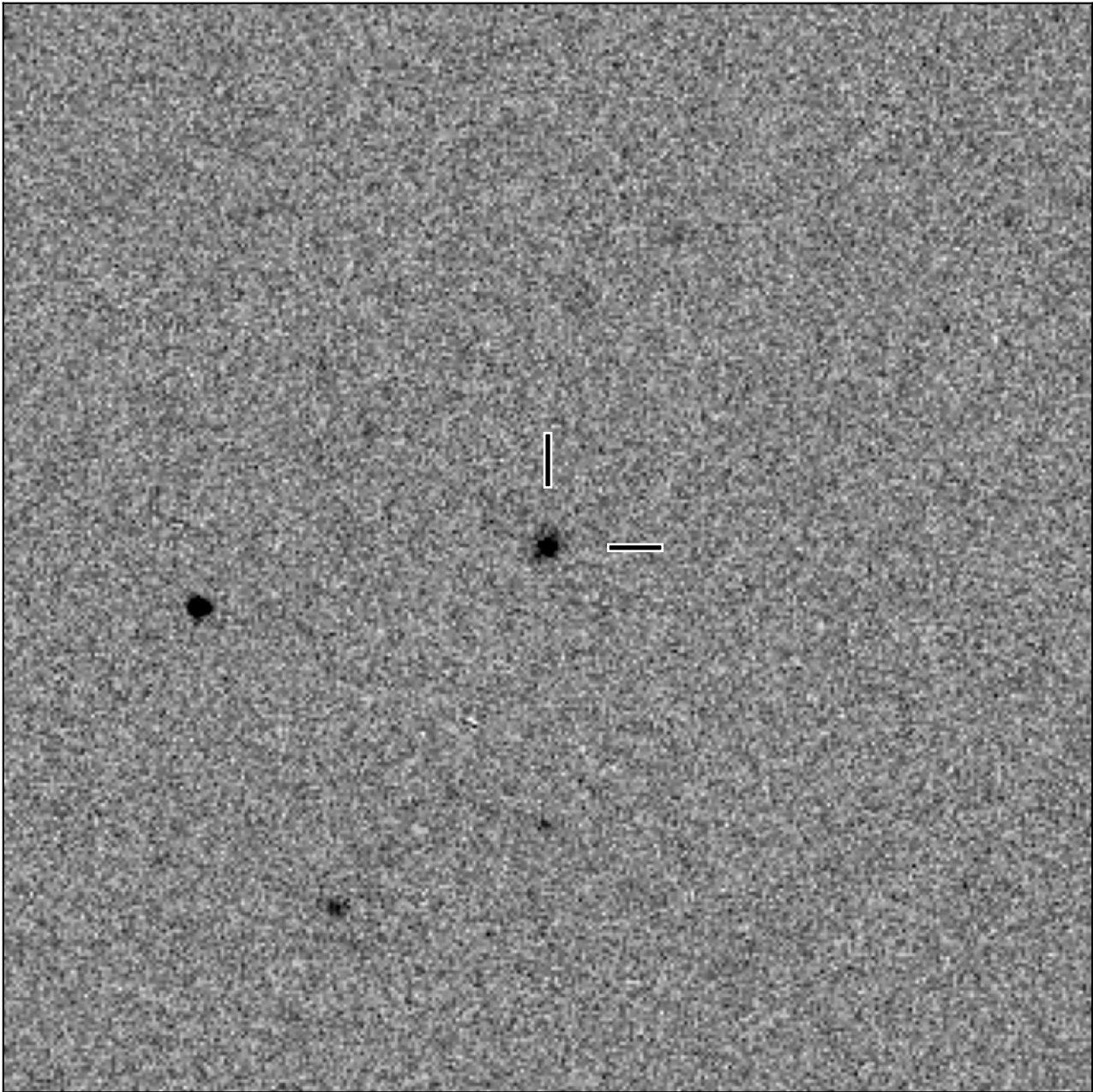


BlackGEM-2 finding chart for BGEM J011014.08-302941.9

North

East



1'

Target: BGEM J011014.08-302941.9
RA (ICRS): 1:10:14.09 (17.5587 deg)
DEC (ICRS): -30:29:41.95 (-30.4950 deg)
Image: BG2_20250522_100744_red
Filter: q
Limiting magnitude: 20.57 (5σ)
Finding chart size: 3.0x3.0 arcmin