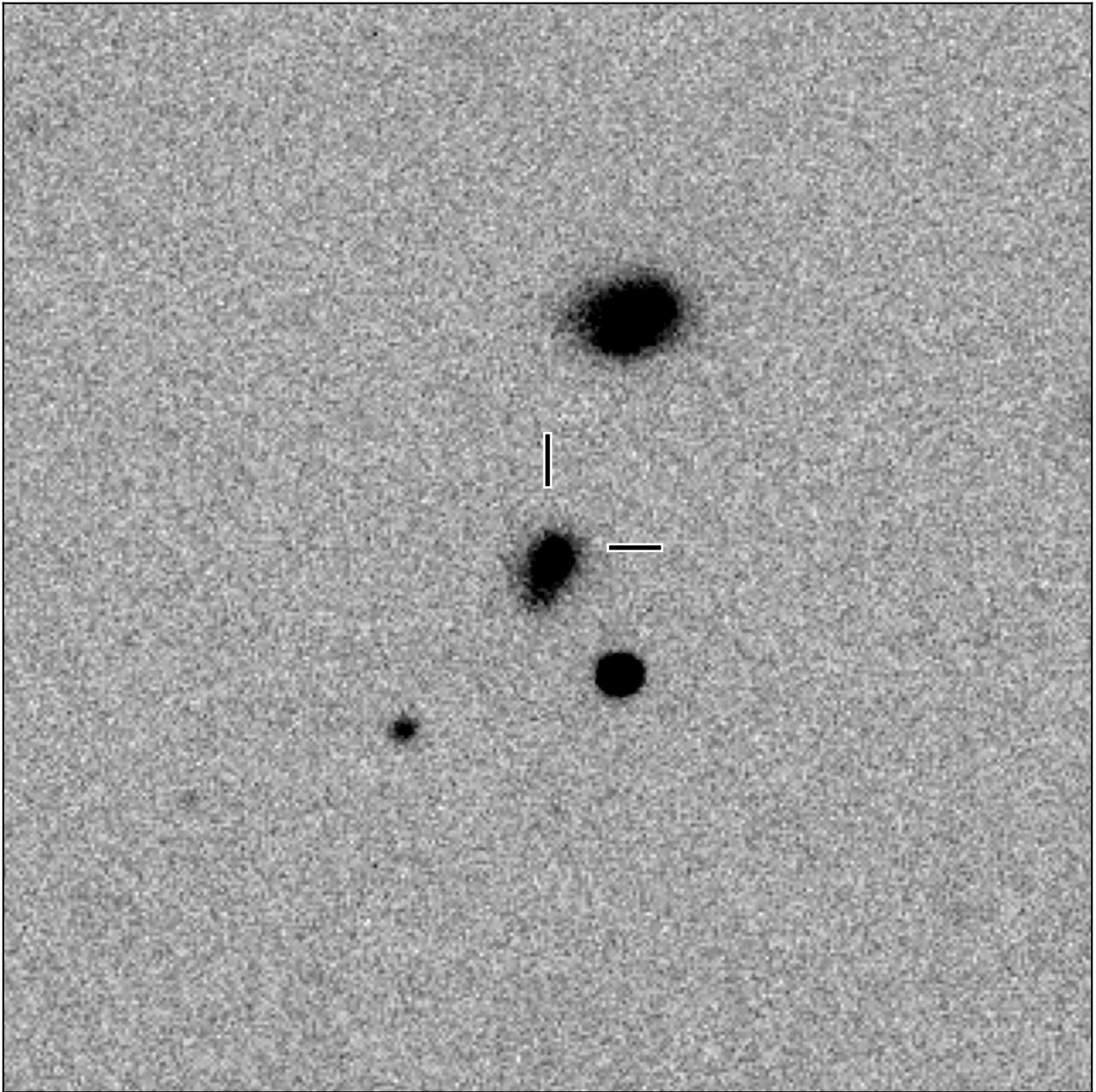


# BlackGEM-2 finding chart for BGEM J023141.61+024758.9

North

East



1'

Target: BGEM J023141.61+024758.9  
RA (ICRS): 2:31:41.62 (37.9234 deg)  
DEC (ICRS): 2:47:58.91 (2.7997 deg)  
Image: BG2\_20250704\_083424\_red  
Filter: q  
Limiting magnitude: 20.37 ( $5\sigma$ )  
Finding chart size: 3.0x3.0 arcmin