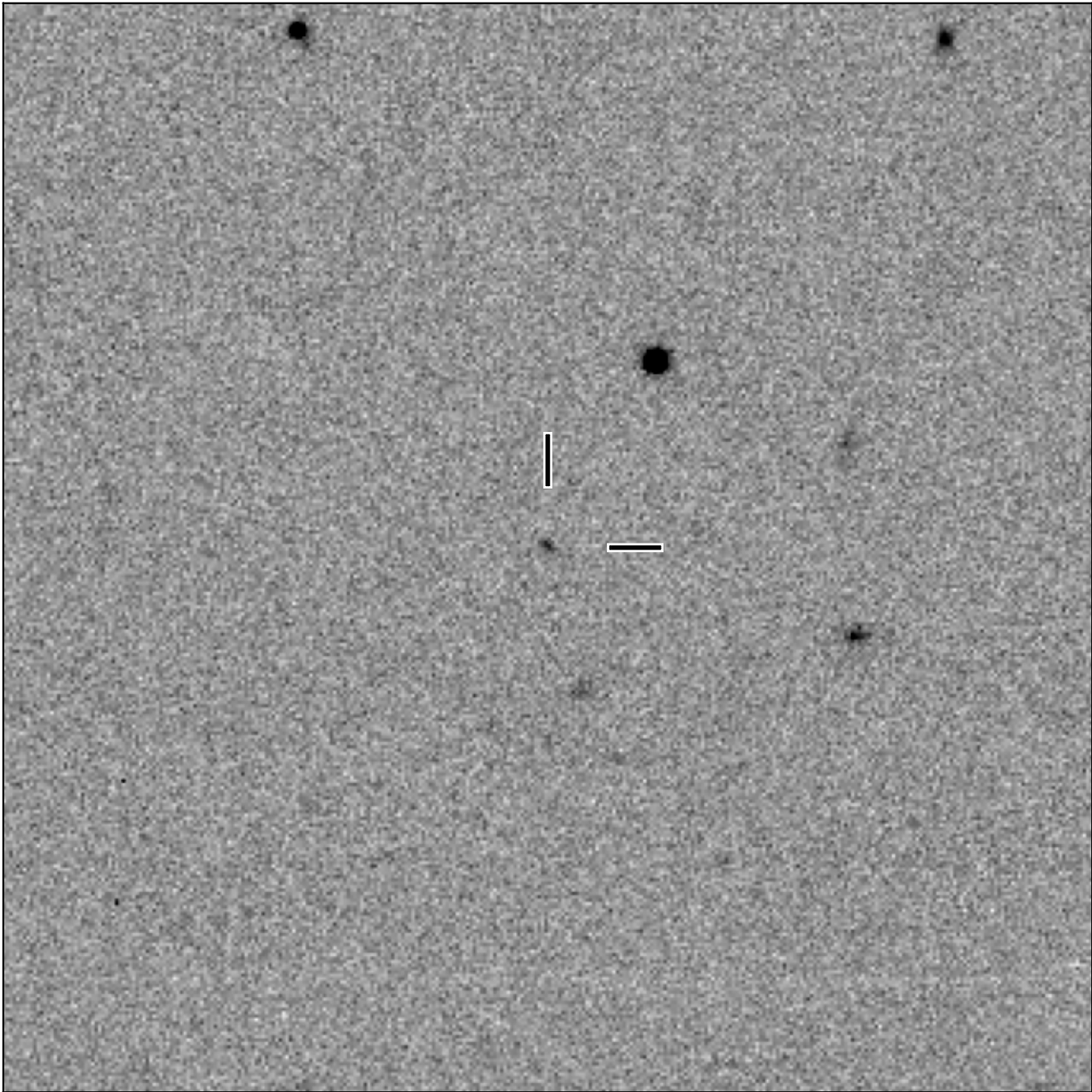


# BlackGEM-2 finding chart for BGEM J004534.38-204402.1

North

East



1'

Target: BGEM J004534.38-204402.1  
RA (ICRS): 0:45:34.39 (11.3933 deg)  
DEC (ICRS): -20:44:02.19 (-20.7339 deg)  
Image: BG2\_20250703\_071937\_red  
Filter: q  
Limiting magnitude: 20.98 ( $5\sigma$ )  
Finding chart size: 3.0x3.0 arcmin