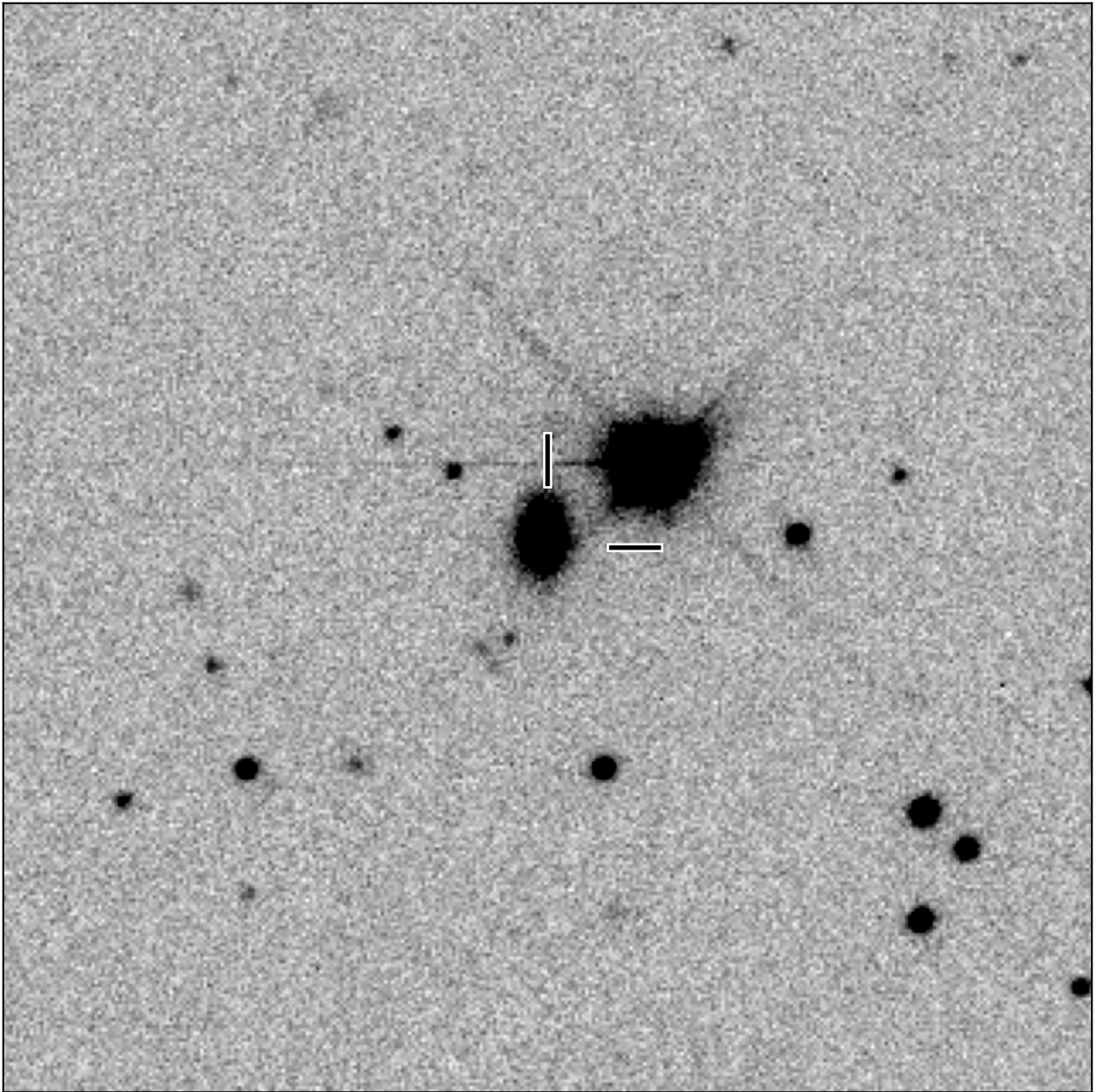


# BlackGEM-2 finding chart for BGEM J201505.09-705933.8

North

East



1'

Target: BGEM J201505.09-705933.8  
RA (ICRS): 20:15:05.10 (303.7712 deg)  
DEC (ICRS): -70:59:33.89 (-70.9927 deg)  
Image: BG2\_20250720\_030432\_red  
Filter: q  
Limiting magnitude: 20.95 ( $5\sigma$ )  
Finding chart size: 3.0x3.0 arcmin